

LEGISLATIVE ASSEMBLY OF THE NORTHERN TERRITORY

WRITTEN QUESTION

Ms Purick to Minister for Education and Training

Lajamanu, Yuendumu, Willowra and Nyirripi Community Schools

For each of the following schools of Lajamanu, Yuendumu, Willowra and Nyirripi would you advise:

1. For each school, how many levels of learning are there at the school and what are the levels

All Warlpiri schools offer Preschool to Year 9 programs. Yuendumu and Lajamanu offer Preschool to Year 12. The schools cater for any school age children living in the community. In the smaller communities this is facilitated through the Northern Territory Open Education Centre for some middle school and senior secondary students. The levels offered are that of any other school in the Northern Territory.

2. How many students are in each level for each school

Lajamanu	2010
Preschool	16
Transition	17
Grade 1	15
Grade 2	31
Grade 3	17
Grade 4	19
Grade 5	16
Grade 6	12
Grade 7	17
Grade 8	9
Grade 9	10
Grade 10	5
Grade 11	2
Grade 12	1
Total	187

Yuendumu	2010
Preschool	17
Transition	27
Grade 1	16
Grade 2	15
Grade 3	17
Grade 4	16
Grade 5	12
Grade 6	14
Grade 7	13
Grade 8	18
Grade 9	3
Grade 10	4
Grade 11	2
Total	174

Willowra	2010
Preschool	8
Transition	7
Grade 1	4
Grade 2	6
Grade 3	10
Grade 4	8

Nyirripi	2010
Transition	5
Grade 1	5
Grade 2	5
Grade 3	4
Grade 4	5
Grade 5	4

Grade 5	4
Grade 6	4
Grade 7	2
Grade 8	3
Grade 9	1
Grade 10	1
Total	58

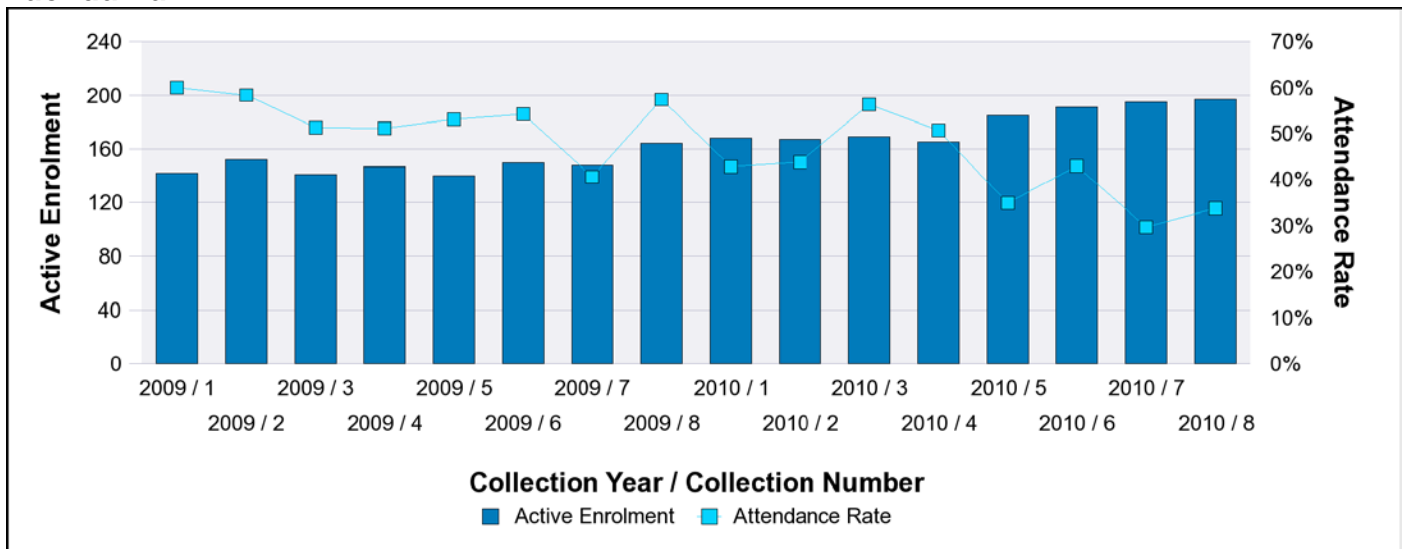
Grade 6	3
Grade 7	5
Grade 8	3
Grade 9	1
Total	40

3. What is the attendance for the data collection periods from January 2010 to November 2010 for each level at each school; and
4. What was the attendance for each level for each school for 8 data collection periods for the year 2009

This report shows school enrolment and attendance data by each periodic collection. Each collection includes four weeks of data collected in Week 4 and Week 8 of each school term. The enrolments are calculated on the last day of the collection period. The attendance is calculated as an average of the four week collection period. Attendance Rate is calculated by dividing the Total Attendance by Active Enrolment. In line with the new policy enrolments will be divided into 2 categories: Active Enrolments are the 'traditional enrolment count'. AtRisk (Passive) enrolments are students who have had 20 consecutive days of unexplained absences (un-notified or unacceptable reason) ie. Passive enrolments are essentially the students who would have been removed from the roll under the now defunct '20 dayrule'.

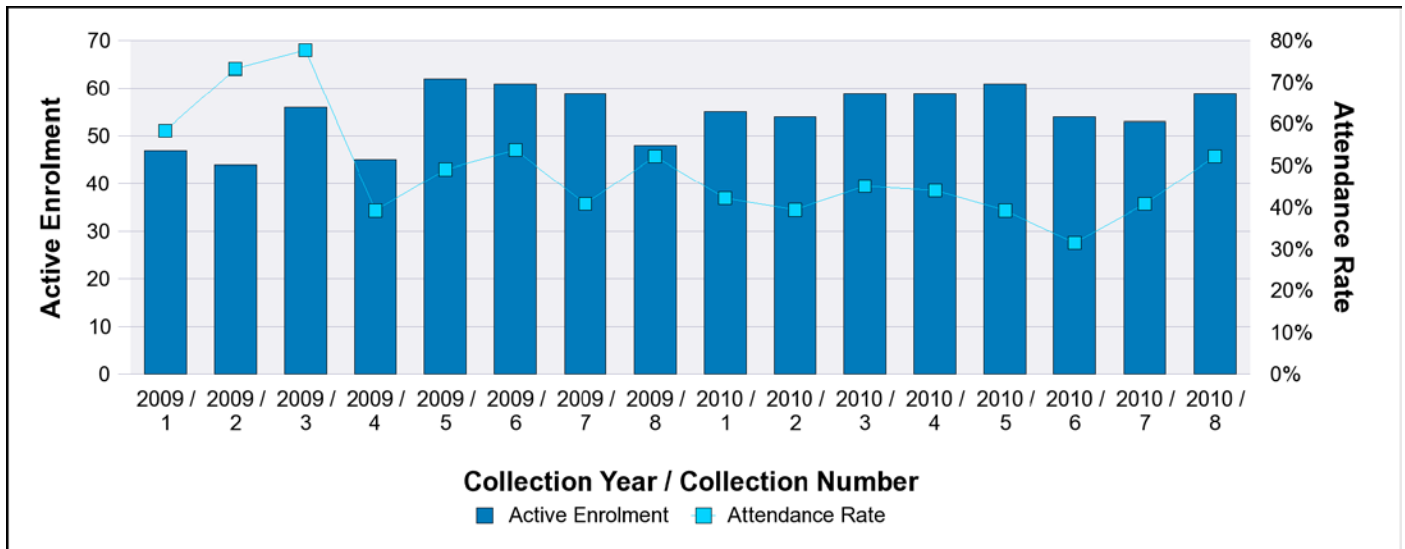
Collections 5 - 8 2010 have not been signed off for release, are still being validated and may change. This data should not be published or distributed. Where it is used or republished please make note that the data is not final.

Yuendumu



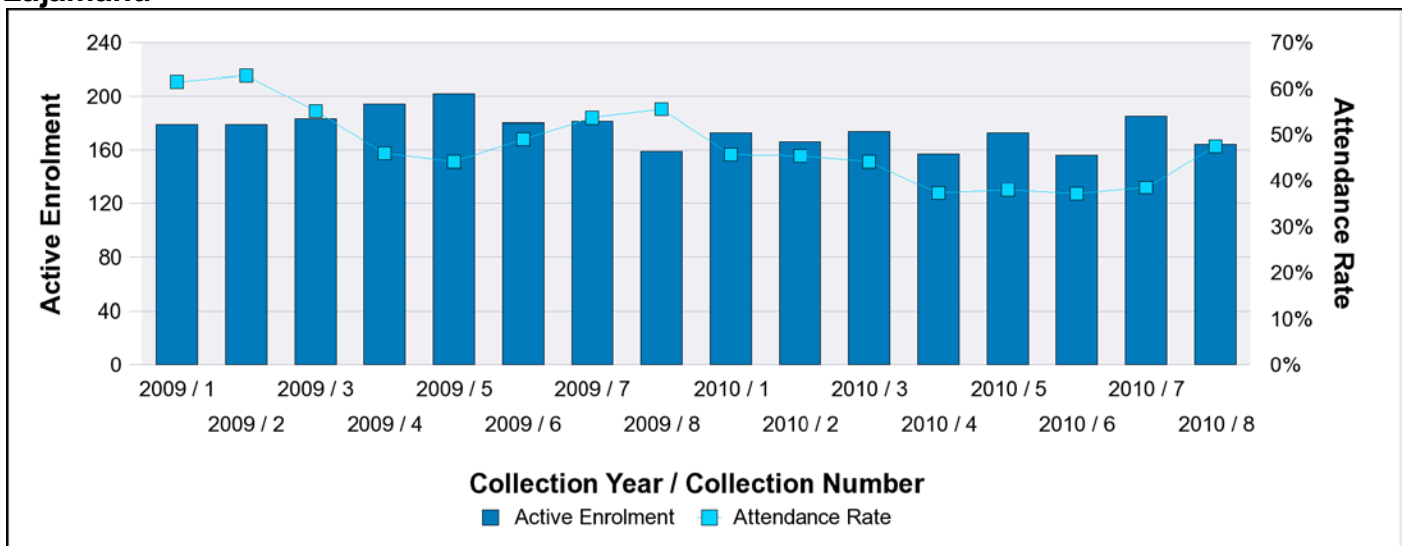
	2009	2010
Feb (1)	142	168
Mar (2)	152	167
May (3)	141	169
Jun (4)	147	165
Aug (5)	140	185
Sep (6)	150	191
Oct (7)	148	195
Nov (8)	164	197
Average:	148	180

Willowra



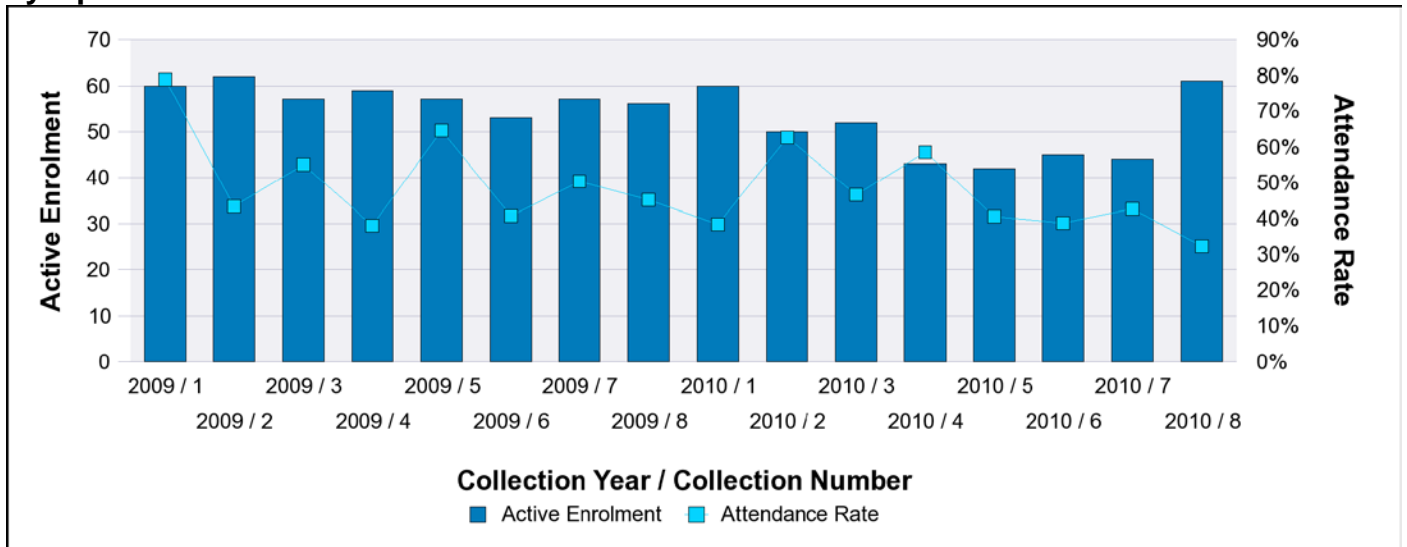
	2009	2010
Feb (1)	47	55
Mar (2)	44	54
May (3)	56	59
Jun (4)	45	59
Aug (5)	62	61
Sep (6)	61	54
Oct (7)	59	53
Nov (8)	48	59
Average:	53	57

Lajamanu



	2009	2010
Feb (1)	179	173
Mar (2)	179	166
May (3)	183	174
Jun (4)	194	157
Aug (5)	202	173
Sep (6)	180	156
Oct (7)	181	185
Nov (8)	159	164
Average:	182	169

Nyirrpi



	2009	2010
Feb (1)	60	60
Mar (2)	62	50
May (3)	57	52
Jun (4)	59	43
Aug (5)	57	42
Sep (6)	53	45
Oct (7)	57	44
Nov (8)	56	61
Average:	58	50

5. How many teachers are at each school and for what level of learning

Lajamanu

- 1 ECP1A Principal
- 1 ST3 Assistant Principal
- 3 ST1 Senior Teachers
- 11 classroom teachers

The student numbers in each year level change over time and the above staff are allocated to meet the needs of the students that come to the school. The allocation of teachers to specific year levels varies depending on the needs of the school.

Yuendumu

1 ST3 Principal
3 ST1 Senior Teachers
13 Classroom Teachers

The student numbers in each year level change over time and the above staff are allocated to meet the needs of the students that come to the school. The allocation of teachers to specific year levels varies depending on the needs of the school.

Willowra

1 ST1 Teaching Principal
1 ST1 Senior Teacher
3 Classroom Teachers

The student numbers in each year level change over time and the above staff are allocated to meet the needs of the students that come to the school. The allocation of teachers to specific year levels varies depending on the needs of the school.

Nyirрпи

1 ST1 Teaching Principal
3.5 Classroom Teachers

The student numbers in each year level change over time and the above staff are allocated to meet the needs of the students that come to the school. The allocation of teachers to specific year levels varies depending on the needs of the school.

All of the schools also have allocations of Assistant Teachers and other ancillary staff that assist in the overall operation of the schools.

6. What are the band levels of the teachers for each school; and

All of the levels of the teachers are included in Question 5. Classroom teacher levels depend on the experience of teachers that are recruited and varies from year to year.

7. How many of the teachers at the four schools are Indigenous people, at which school, at what level

Lajamanu

Lajamanu has one four-year trained Indigenous Senior Teacher and one four-year trained Indigenous Classroom Teacher. The school also has several Indigenous Assistant Teachers and other Indigenous staff that work in the school.

Yuendumu

Yuendumu has three four-year trained Indigenous teachers at the school. The school also has several Indigenous Assistant Teachers and other Indigenous staff that work in the school.

Willowra

Willowra has no Indigenous four-year trained Indigenous teachers at the school. The school does have several Indigenous Assistant Teachers and other Indigenous staff that work in the school.

Nyirрпи

Nyirрпи has one Indigenous four-year trained Indigenous teacher at the school. The school also has several Indigenous Assistant Teachers and other Indigenous staff that work in the school.