



**PUBLIC ACCOUNTS
COMMITTEE**

LEGISLATIVE ASSEMBLY OF THE NORTHERN TERRITORY

PUBLIC ACCOUNTS COMMITTEE

REPORT ON 1990 ELECTION COSTS

REPORT NO. 14

NOVEMBER 1991

Presented and Ordered
to be printed by the
Legislative Assembly
of the Northern Territory
on 19 November 1991

LEGISLATIVE ASSEMBLY OF THE NORTHERN TERRITORY

PUBLIC ACCOUNTS COMMITTEE

REPORT ON 1990 ELECTION COSTS

REPORT NUMBER 14

NOVEMBER 1991

SECRETARIAT

SUSANNE LEE BA (ACCOUNTING) CPA: Secretary to the Committee

DIANNE STANFORD: Administrative Assistant to the Secretary

LEGISLATIVE ASSEMBLY OF THE NORTHERN TERRITORY

PUBLIC ACCOUNTS COMMITTEE

GPO BOX 3721
DARWIN NT 0801

TELEPHONE: (089) 461 411

FACSIMILE: (089) 812 528

TELEX: AA85154
TELEGRAMS COMPARLAS

PUBLIC ACCOUNTS COMMITTEE
REPORT ON 1990 ELECTION COSTS

CONTENTS		PAGE NO
CHAPTER 1	Committee Members	3
CHAPTER 2	Terms of Reference	5
CHAPTER 3	Introduction	7
CHAPTER 4	Summary of Findings and Recommendations	9
CHAPTER 5	Conduct of the Election	11
CHAPTER 6	Management Issues	19
DISSENTING REPORT		23
APPENDICES		
APPENDIX A	Financial Statements	
APPENDIX B	Northern Territory Electoral Office Staffing Structure	
APPENDIX C	Elections Conducted July-October 1990	
APPENDIX D	Election Dates	
APPENDIX E	Postal Votes Issued by Division	
APPENDIX F	Comparative Voter Turnout by Division 1987-1990	
APPENDIX G	Comparative Voter Turnout 1974-1990	
APPENDIX H	Itineraries of Mobile Polling	
APPENDIX I	Votes Cast at Mobile Polling Places	

CHAPTER 1

COMMITTEE MEMBERS

Members of the Public Accounts Committee are:

MR MICK PALMER, MLA Chairman

Country Liberal Party

Member for Karama. First elected 1983

Other Committees: House; Subordinate Legislation and Tabled Papers; Use and Abuse of Alcohol by the Community.

MR JOHN BAILEY, MLA

Australian Labor Party

Member for Wanguri. First Elected 1989.

Shadow Minister for Mines and Energy; Industries and Development; Trade Development Zone.

Other Committees: Constitutional Development; Environment; Publications.

MR RICK SETTER, MLA

Country Liberal Party

Member for Jingili. First elected 1984.

Government Whip.

Other Committees: Publication (Chairman); Subordinate Legislation and Tabled Papers (Chairman); Constitutional Development; New Parliament House.

MR SYD STIRLING, MLA

Australian Labor Party

Member for Nhulunbuy. First elected 1990.

Shadow Minister for Transport and Works; Power and Water Authority; Sport and Recreation; Racing and the TAB; Ports; Government Printer.

Other Committees: Constitutional Development; Subordinate Legislation and Tabled Papers.

MR ERIC POOLE, MLA

Country Liberal Party

Member for Araluen. First elected 1986.

Chairman of Committees.

Other Committees: House; Publications; Subordinate Legislation and Tabled Papers; Use and Abuse of Alcohol by the Community (Chairman).

CHAPTER I COMMITTEE MEMBERS

Members of the Public Account Committee are:

MR. NICK PALMER, M.A. Chairman

County Liberal Party

Member for Kansas First elected 1953

Other Committees: House; Subordinate Legislation and Tabled Papers; Use and Abuse of Alcohol by the Community

MR. JOHN BARKER, M.A.

Australian Labor Party

Member for Wynnum First Elected 1951

Shadow Minister for Mines and Energy, Fisheries and Development, Trade Development Zone

Other Committees: Constitutional Development, Environment, Fisheries

MR. RICK SETTER, M.A.

County Liberal Party

Member for Leigh First elected 1954

Government Whip

Other Committees: Parliament (Chairman); Subordinate Legislation etc.

Tabled Papers (Chairman); Constitutional Development; New Parliament House

MR. GUY STERLING, M.A.

Australian Labor Party

Member for Mackay First elected 1951

Shadow Minister for Transport and Water Power and Water Conservation, Sport and Recreation, Housing and the TAB, Rural Development, Forest

Other Committees: Constitutional Development; Subordinate Legislation and Tabled Papers

MR. ERIC BOULE, M.A.

County Liberal Party

Member for Ararat First elected 1952

Chairman of Committee

Other Committees: House; Subordinate Legislation and Tabled Papers; Use and Abuse of Alcohol by the Community (Chairman)

CHAPTER 2

TERMS OF REFERENCE

In accordance with Clause 2(d) of the Terms of Reference of the Public Accounts Committee, the Chief Minister, Mr Marshall Perron, requested the Committee to inquire into and report to the Legislative Assembly on the following matter:

"The efficient conduct of the 1990 General Territory Election with particular regard to the cost efficiency of:-

- (a) the employment and/or secondment of temporary staff;
- (b) mobile polling;
- (c) postal voting; and
- (d) the conduct of the actual poll including the subsequent count of votes".

CHAPTER 2

TERMS OF REFERENCE

In accordance with Clause 2(d) of the Terms of Reference of the Public Accounts Committee, the Chief Minister, Mr. Mahesh Patel, requested the Committee to report into and report to the Legislative Assembly on the following matter:

The efficient conduct of the 1990 General Assembly Election was pertinent to the cost efficiency of

- (a) the employment and/or recruitment of temporary staff;
- (b) mobile polling;
- (c) postal voting; and
- (d) the conduct of the actual poll including the subsequent work of

CHAPTER 3

INTRODUCTION

At its meeting (No. 60) on the 21st March 1991 the Public Accounts Committee accepted a reference from the Chief Minister to inquire into the efficient conduct of the 1990 Legislative Assembly General Election. The Terms of Reference for the Inquiry are set out in Chapter 2 of this report.

In assessing the cost efficiency of the election the Committee considered a range of factors and performance indicators including:

- * actual and comparative election costs;
- * demographic changes since the 1987 General Election;
- * enrolment and voter turnout statistics;
- * election time frames;
- * obligations imposed on the Chief Electoral Officer by the Electoral Act;
- * comparative data on the 1990 and 1987 General Elections; and
- * a report by the Internal Audit Bureau on financial operations and the Chief Electoral Officer's response.

The Committee has concluded that the 1990 General Election was conducted efficiently and effectively, as evinced by a range of performance indicators. The Committee is mindful that in conducting impartial elections the Chief Electoral Officer exercises statutory powers which quite properly rest with his Statutory Office. The Committee has, however, made a number of recommendations to enhance the administrative and financial management components of the election cycle.

CHAPTER 2 INTRODUCTION

At its meeting (Dec 50) on the 21st March 1951 the Public Accounts Committee accepted a reference from the Chief Minister to inquire into the efficient conduct of the 1950 Legislative Assembly General Election. The Terms of Reference for the inquiry are set out in Chapter 3 of this report.

In assessing the cost efficiency of the election the Committee considered a range of factors and performance indicators including:

- actual and comparative election costs;
- demographic changes from the 1947 General Election;
- enrolment and voter turnout statistics;
- election law changes;
- obligations imposed on the Chief Election Officer by the Electoral Act;
- comparative data on the 1950 and 1957 General Elections; and
- a report by the Internal Audit Bureau for financial operations and the Chief Election Officer's response.

The Committee has concluded from the 1950 General Election was conducted efficiently and effectively, as reflected by a range of performance indicators. The Committee is minded that in conducting inquiries relating to the Chief Election Officer's activities relating to general elections, it should continue to exercise its powers which have been conferred upon it by the Electoral Act. However, it is recommended that the Committee should continue to exercise its powers to ensure the administrative and financial management of the election process.

CHAPTER 4

SUMMARY OF FINDINGS AND RECOMMENDATIONS

Findings

In general terms the Committee has made the following findings:

- * A range of performance indicators confirm that the 1990 General Election was conducted cost effectively.
- * The election was conducted within the \$550,000 budget allocation.
- * Substantial changes in the Territory's demography have impacted on mobile polling arrangements and other election strategies.
- * There is a financial penalty if an election is conducted within a minimum time frame.
- * There is some merit in having a team of Northern Territory residents trained to conduct mobile polling notwithstanding the fact that cost savings may be marginal.
- * There are a number of potential enhancements to management of the election cycle.

Recommendations

The Committee recommends that:

1. The Electoral Office prepare a strategy paper on the feasibility of developing a pool of local residents capable of conducting mobile polling.
2. The Government determine whether the Police Department's aircraft could be made available to mobile polling during future general elections.
- *3. The Government notes there are cost implications when elections are conducted within minimum time frames.

- * Note Dissenting Report, see p. 23

4. The Electoral Act be amended to provide that for the purposes of the conduct of elections the Chief Electoral Officer has financial and personnel delegations equivalent to those of a Chief Executive Officer.
5. The Government Accounting System and Payroll System for processing of election transactions be implemented on a priority basis.
6. The Electoral Act be amended to make provision for tabling of a report by the Chief Electoral Officer after each election including audited financial statements.
7. In each year of the election cycle the Northern Territory Treasury be advised of the notional cost of a Legislative Assembly General Election and a By-Election in a rural as well as an urban division.

CHAPTER 5

CONDUCT OF THE ELECTION

Background

In assessing the conduct of a General Election in the Northern Territory it is necessary to take a range of considerations into account. Essentially elections are about ensuring that persons entitled to exercise the franchise are given the opportunity to vote. In the unique demographic and geographic context of the Northern Territory, enfranchising eligible citizens involves the provision of services to electors of differing cultural and linguistic backgrounds dispersed over one sixth of Australia's land mass. Elector numbers, geographic dispersion of electors, the time available to conduct an election and the quality of postal services impact on election costs.

Employment/Secondment of Temporary Staff

The permanent staffing structure of the Electoral Office comprises seven positions as identified at Appendix B. It is therefore necessary to employ temporary staff to assist with the conduct of major elections. Temporary staff fall into the following categories:

- * Assistant Returning Officers and Assistant Officers in static polling places.
- * Electoral practitioners seconded from the Commonwealth and State administrations to undertake duties as mobile polling team leaders.
- * Mobile polling team members and local assistants.
- * Office casuals employed to assist with election arrangements, issue postal votes and to provide services and information to the general public.

The number of temporary staff employed for an election is determined by a range of factors including:

- * The number of static polling places appointed.
- * The number of mobile polling teams deployed.
- * The demand for postal voting and other services.
- * The period of time between Writ issue and polling day.

During the inquiry the Committee sought information on the practice of seconding interstate personnel to assist with the conduct of general elections. Interstate electoral practitioners have been used at every general election since self-government.

Their employment offers the following advantages:

- * They are expert electoral practitioners who require minimum training to undertake the task of mobile polling. Mobile polling involves a number of unique aspects and there is a frequent requirement to make important on-the-spot decisions in a difficult environment.
- * They are, and are seen to be, totally impartial.
- * They have the skills and experience necessary to resist pressure exerted by party workers and candidates' representatives in the context of bitter partisan contests.

In terms of expenditure on interstate personnel it should be noted that the Electoral Office does not incur the cost of salaries for interstate personnel during the period of secondment. Secondees are remunerated at the standard polling official rate for work on the weekend of the poll. They are not remunerated for field work as mobile polling team leaders in the week preceding polling day. Generally, the additional cost of employing interstate secondees is minimal. This conclusion rests on the following facts:

- * Travelling allowance is paid to a mobile polling team leader irrespective of the point of recruitment.
- * While employment of interstate personnel involves payment of airfares to home base, unlike local recruits they are not remunerated for work in the field other than at the standard polling official rate on the weekend of the poll.

Eighteen interstate personnel were utilised for the 1990 General Election. This is a reduction of five in the number of interstate staff used in 1987. The clash of the Legislative Assembly and ATSIC elections resulted in the unavailability of six local staff which, under other circumstances, would have reduced the number of interstate secondees to twelve.

In discussing alternative approaches to the recruitment of mobile polling team leaders the Chief Electoral Officer advised the Committee that:

"The alternative to utilising interstate personnel for general elections is to recruit and train a pool of potential mobile team leaders and regional co-ordinators who

could be called upon as required. This strategy would involve periodic training on a six monthly or annual basis. However, the high turnover of population in the Territory could tend to continually diminish the pool of potential mobile polling team leaders and regional co-ordinators. In addition, it should be noted that in the difficult remote electoral environment there is no substitute for extensive electoral knowledge and experience".

Mobile polling and staffing strategies are revised as part of the planning process for each general election. Expressions of interest for employment as a polling official are invited by public advertisement and in each calendar year.

Notwithstanding the fact that cost savings may be marginal there is some merit in having a team of N.T. residents trained to conduct mobile polling.

Recommendation 1

It is recommended that the Electoral Office prepare a strategy paper on the feasibility of developing a pool of local residents capable of conducting mobile polling.

Mobile Polling

Sub-section 64(1) of the Electoral Act provides that the Chief Minister may authorise the use of mobile polling teams for an election. Sub-section 64(2) provides that the Chief Electoral Officer shall specify the location, date and hours of mobile polling.

Mobile polling for parliamentary elections was pioneered in Australia at the Territory's 1980 Legislative Assembly General Election. Mobile polling has been used at successive general elections and is an integral component of the Electoral Office's strategy to enfranchise electors.

Twenty-four mobile polling teams were deployed for the 1990 General Election. Itineraries and votes taken by mobile polling teams are set out at Appendices H and I respectively.

There was a substantial increase in the number of polling places visited during the 1990 General Elections. This was in direct response to demographic changes in the relevant period. In remote divisions, enrolment increased by 4,716 or 22.32% between the 1987 and 1990 elections. In explaining the philosophy underpinning the mobile polling strategy adopted for the 1990 election the Chief Electoral Officer stated:

"The electoral process is at the heart of the democratic process. The conduct of free and fair elections is essential to the community's acceptance of the election outcome.

In the Northern Territory enrolment and voting for eligible persons are compulsory. Where citizens fulfil their responsibilities by enrolling, it is incumbent on the electoral administration to provide electors with the opportunity to cast a meaningful vote, irrespective of place of residence or ethnic background.

Failure by the electoral administration to provide electors with the opportunity to vote could result in the Election Tribunal ordering the conduct of a fresh election with attendant costs. In the case of a closely contested election, in overall terms, disenfranchisement of eligible electors could cause the need for the conduct of another general election".

In determining mobile polling locations the Electoral Office considers a range of criteria including:

- * Number of electors enrolled.
- * Voter turnout at previous elections.
- * Remote community profiles.
- * Election time frame.
- * Adequacy of postal services.

Mobile polling is planned so as to minimise the cost of remote polling. To the fullest extent possible road transportation is utilised. Where travel by surface vehicle is not viable because of distance or road quality, aircraft are utilised. Electoral Office policy is to use fixed wing twin engine aircraft. On the rare occasion when there is no other available alternative, helicopters are deployed. Their use is deliberately minimised because of cost implications.

Mobile polling itineraries are structured logically to minimise backtracking and attendant costs. Elector turnout is frequently unpredictable because of the high mobility of many remote communities. Cultural factors such as ceremonies and sorry camps can require adjustment to itineraries.

Conduct of mobile polling across the Northern Territory in extremely short time frames is a major logistical exercise. The record voter turnout for the 1990 General Election (81.59%) and the reduced level of informal voting confirms the effectiveness

of the mobile polling strategy. In the final analysis, appointment of mobile polling places is a statutory responsibility which clearly rests with the Chief Electoral Officer.

During the inquiry the Committee sought advice on whether the option of utilising the Police Department's Navajos for mobile polling had been considered. The Chief Electoral Officer informed the Committee that this option had never been previously considered.

Recommendation 2

It is recommended that the Government determine whether the Police Department's aircraft could be made available to mobile polling during future general elections.

Postal Voting

As indicated at Appendix E 4,902 postal votes were issued for the 1990 Legislative Assembly General Election. A substantial portion of postal votes were issued "in person" at Electoral Offices in the week preceding polling day.

For the first time at a general election, in addition to Darwin and Alice Springs, postal votes were issued from Katherine, Tennant Creek, Nhulunbuy and interstate capital cities.

This new service extended the opportunity to vote to some 682 electors who may otherwise have been disenfranchised. Due to the short time frame in which the election was conducted and the inadequacy of postal services to many remote regions, postal voting services are complemented by extensive mobile polling.

Conduct of the Poll including the subsequent Count of Votes

A range of factors and performance indicators confirm the efficient and effective conduct of the 1990 General Election. Salient points include:

- * The election was conducted within budget. (Appendix A)
- * The election coincided with the conduct of other major electoral events. (Appendix C)
- * There were eighteen days between Writ issue and polling day. (Appendix D)
- * Between the 1987 and 1990 elections, total enrolment increased by 7,628 or 10.22%. (Appendix F)

- * An additional 18 static polling places were utilised.
- * An additional 115 mobile polling places were visited (includes hospitals and prisons).
- * Postal voting facilities were available for the first time in all State and Territory capital cities.
- * Postal voting facilities were available for the first time during a general election at Nhulunbuy, Katherine and Tennant Creek.
- * 4,902 postal votes were issued, an increase of 62% on the 1987 general election. (Appendix E)
- * Regional co-ordinators were deployed in major centres outside Darwin for the first time for a general election.
- * Cost increase in real terms was 7.25% on the 1987 election.
- * Increased cost coincided with a range of additional services to the voting public.
- * Cost per elector decreased by 17.7% between the 1987 and 1990 elections.
- * Actual voter turnout increased by 13,990 or 26.38% on the 1987 election. (Appendix F)
- * Percentage turnout of enrolled electors was 81.59%, the highest ever for a Legislative Assembly General Election. This represents an increase of 10.41% on the 1987 election.
- * The informal vote decreased by 1.04% on the 1987 election.
- * There were no petitions lodged with the Court of Disputed Returns.

During the inquiry a significant issue identified was the impact of election time frames on election costs. As indicated above, for the 1990 election there were eighteen days between Writ issue and polling day. As indicated at Appendix F there has been a continuing increase in elector numbers in both urban and remote locations at successive elections. It will become increasingly difficult to conduct elections within absolute minimum times as the dispersion and number of electors increases. Moreover, while it is difficult to quantify precisely, minimum election dates result in substantially increased election costs. This is particularly true of costs associated with temporary staff, overtime and mobile polling. (See Appendix A)

***Recommendation 3**

CHAPTER 3

It is recommended that the Government notes there are cost implications when elections are conducted within minimum time frames.

Delegations

During the inquiry it became apparent that some uncertainty has arisen concerning the nature of delegations and powers of delegation by the Chief Electoral Officer during the period of the Electoral Act. It is recommended that the Government consider the need to clarify the powers of delegation of the Chief Electoral Officer to expand on the scope of delegations and to ensure that they are clearly defined.

* Note Dissenting Report, see p. 23

It is essential that there is no possibility of the Chief Electoral Officer's statutory obligations under the Electoral Act being impaired by inadequate financial and personnel delegations. It is essential that an officer with significant statutory responsibilities, particularly those involving the protection of services for the conduct of elections, be given appropriate financial and personnel delegations.

Recommendation 4

It is recommended that the Electoral Act be amended to provide that for the purposes of the conduct of elections the Chief Electoral Officer has financial and personnel delegations equivalent to those of a Chief Executive Officer.

Computer Processing of Accounts

From the 1980 General Election the Electoral Office initiated plans for computerising election accounts. A number of issues concerning progress and the system was not investigated prior to the election. The manual system used for processing election accounts and payments to temporary staff experienced difficulties in coping with the large volume of financial transactions generated. The Chief Electoral Officer has advised the Committee that election accounting needs are being reviewed in the context of the 1990 election experience. The Committee has formed the view that the Government Accounting System and Payroll System are suitable for the processing of election transactions but implementation is a priority.

Recommendation 5

It is recommended that the Government Accounting System and Payroll System be processed of election transactions be implemented on a priority basis.

As additional data points were added

It is recommended that the Department note that the following data
sections are contained within minimum time frames.

and will be in compliance with the following data points

Section 101 and 102 of the following data points
Note: Section 101 and 102 of the following data points

Section 101 and 102 of the following data points

Section 101 and 102 of the following data points

Section 101 and 102 of the following data points

Section 101 and 102 of the following data points

Section 101 and 102 of the following data points

Section 101 and 102 of the following data points

Section 101 and 102 of the following data points

Section 101 and 102 of the following data points

Section 101 and 102 of the following data points

Section 101 and 102 of the following data points

Section 101 and 102 of the following data points

Section 101 and 102 of the following data points

CHAPTER 6

MANAGEMENT ISSUES

Delegations

During the inquiry it became apparent that some uncertainty has arisen concerning the exercise of financial and personnel delegations by the Chief Electoral Officer during the conduct of elections. While the Electoral Act makes provision for the appointment of polling officials, it is silent on the authority of the Chief Electoral Officer to expend monies on the conduct of elections and to recruit temporary staff other than polling officials.

It is essential that there is no possibility of the Chief Electoral Officer's statutory obligations under the Electoral Act being impaired by inadequate financial and personnel delegations. It is axiomatic that an officer with significant statutory responsibilities, particularly those involving the provision of services for the conduct of elections, be given commensurate financial and personnel delegations.

Recommendation 4

It is recommended that the Electoral Act be amended to provide that for the purposes of the conduct of elections the Chief Electoral Officer has financial and personnel delegations equivalent to those of a Chief Executive Officer.

Computer Processing of Accounts

Prior to the 1990 General Election the Electoral Office initiated plans for computerising election accounts. A number of factors constrained progress and the system was not implemented prior to the election. The manual system used for processing election accounts and payments to temporary staff experienced difficulties in coping with the large volume of financial transactions generated. The Chief Electoral Officer has advised the Committee that election accounting needs are being reassessed in the context of the 1990 election experience. The Committee has formed the view that the Government Accounting System and Payroll System are suitable for the processing of election accounts.

Recommendation 5

It is recommended that the Government Accounting System and Payroll System for processing of election transactions be implemented on a priority basis.

Reporting to Parliament

Under existing law there is no statutory requirement for formal reporting to the Northern Territory Parliament on the conduct of elections.

The Committee believes that the increased responsibility and autonomy for the conduct of elections advocated above should be complemented by increased accountability and reporting.

Recommendation 6

It is recommended that the Electoral Act be amended to make provision for tabling of a report by the Chief Electoral Officer after each election including audited financial statements.

Annual Election Budgets

During the inquiry the Chief Electoral Officer advised the Committee that as part of planning processes an election budget would be prepared in each year of the election cycle. Although there is minimum likelihood of a general election in the earlier years of the election cycle, budget preparation brings election planning matters into sharp focus. The Committee commends this proposed strategy and believes that there is merit in providing a notional election cost to the Northern Territory Treasury in each year of the election cycle with a view to enhancing global fiscal strategies.

Similarly the notional cost of a By-Election in a rural as well as a urban division could be estimated.

Recommendation 7

It is recommended that in each year of the election cycle the Northern Territory Treasury be advised of the notional cost of a Legislative Assembly General Election and a By-Election in a rural as well as an urban division.

Independent Electoral Commission

The Northern Territory is the only jurisdiction in which the establishment of an Independent Electoral Commission has not been initiated. In addition to philosophical arguments supporting the establishment of an Electoral Commission in the Territory, it has been put to the Committee by the Chief Electoral Officer that an electoral administration headed by an Independent Electoral Commissioner would result in increased cost efficiency and enhanced accountability.

Although the Committee does not intend to address this issue in its current report, the Chief Electoral Officer has been asked to provide the Committee with a paper on the benefits of establishing an Electoral Commission in the Northern Territory. At a later stage the Committee will consider whether it is appropriate to make formal recommendations to government on the financial benefits of an Independent Electoral Commission when the Chief Electoral Officer's paper is available.

PREPARED BY MR JOHN BAILEY MLA AND MR JUDY STELLARS MLA

FOR THE PUBLIC ACCOUNTS COMMITTEE

OF ITS ACCOUNTS INTO THE 1994 ELECTIONS

DATED 23rd March 1994

DISSENTING REPORT

SUBMITTED BY MR JOHN BAILEY MLA AND MR SYD STERLING MLA

TO THE PUBLIC ACCOUNTS COMMITTEE

ON ITS INQUIRY INTO THE 1990 ELECTION COSTS

DATED 22nd October 1991

DISSENTING REPORT

SUBMITTED BY MR JOHN BAILEY MIA AND MR SID STERLING MIA

TO THE PUBLIC ACCOUNTS COMMITTEE

ON ITS INQUIRY INTO THE 1990 ELECTION COSTS

WATERBURY, MASSACHUSETTS 1991

COMMENT BY MR JOHN BAILEY MLA AND MR SYD STIRLING MLA IN
RELATION TO RECOMMENDATION NO. 3 OF THE COMMITTEE REPORT.

"It is our opinion that a minimum time frame has a pronounced effect on the total cost of running a Northern Territory General Election.

Hence we proposed the alternative recommendation stated below."

Recommendation 3

It is recommended that the Government consider extending the limitation of dates for general elections so as to provide for a minimum of 24 days between Writ issues and polling day.

APPENDIX A

1974 COMPLETIVE BUDGET OPERATIONAL PLAN STATEMENT OF BUDGETING

CODE		COSTING
1000	STAFF	
1010	PERSONNEL	
1011	Supervisor W/PA Salary	17,441.00
1020	Overhead and Indirect Expenses	
1021	Supervisor Salary	20,708.87
1022	Personnel W/PA Salary	13,488.33
1030	Professional Service Fees	
1031	Professional Service Fees	24,731.71
1040	FINANCIAL STATEMENTS	2,437.50
1041	Professional Service Fees	1,100.00
1042	Books/Supplies	4,217.50
1043	Travel/Expenses	1,120.00
1050	Printing Staff Expenses	
1051	Professional Accounting Services	17,136.32
1052	Printing of Reports	1,210.00
1053	Supervisor of Service	20,100.00
1054	Books/Supplies	1,870.00
1060	Printing Staff Payroll	
1061	Payroll	4,045.40
1062	Social Security	21,541.00
1063	Life Insurance	5,761.00
1070	Insurance Policies	
1071	Life Insurance	1,000.00
1080	Other Expenses	
1081	Miscellaneous/Travel/Supplies	1,200.00
		117,102.42

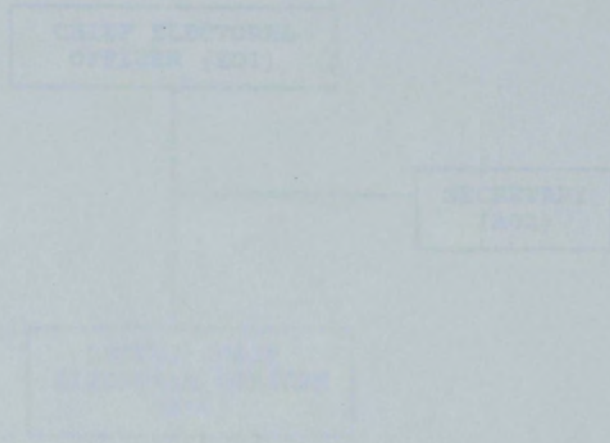
1990 LEGISLATIVE ASSEMBLY GENERAL ELECTION

STATEMENT OF EXPENDITURE

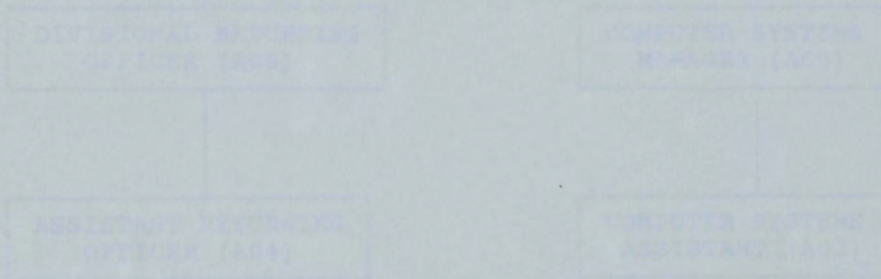
<u>ITEM</u>	<u>COST(\$)</u>
1. STAFF	
(a) Salaries	
(i) Seconded NTPS Staff	17,402.05
(b) Overtime and Meal Allowances	
(i) Permanent Staff	20,606.87
(ii) Seconded NTPS Staff	3,886.85
(c) Regional Office Staff	
(i) Darwin	24,821.71
(ii) Katherine	2,433.89
(iii) Tennant Creek	2,128.88
(iv) Alice Springs	4,413.64
(v) Nhulunbuy	1,821.19
(d) Polling Staff (Static)	
(i) Assistant Returning Officers	16,126.52
(ii) Second in Charge	2,276.68
(iii) Assistant Officers	68,994.06
(iv) Local Assistants	1,976.27
(e) Polling Staff (Mobile)	
(i) Team Leaders	8,055.42
(ii) Team Members	33,542.71
(iii) Local Assistants	5,361.69
(f) Mileage Claims	
(i) Official Duties	199.12
(g) Tally Centre	
(i) Receiving Clerks/Runners	1,054.88
	215,102.43

2.	TRAVEL			
	(a)	Air Fares		
		(i)	Seconded Officers	18,060.00
		(ii)	Other	1,214.00
	(b)	Air Charters		
		(i)	Mobiles	44,081.76
		(ii)	Other	10,718.00
	(c)	Vehicle Hire		
		(i)	Mobiles	10,929.36
		(ii)	Regional Offices	11,157.86
		(iii)	Other	646.41
	(d)	Travelling Allowance		
		(i)	Seconded Officers	43,306.91
		(ii)	Mobile Polling Teams	21,297.55
		(iii)	Other	682.73
	(e)	Fuel	3,368.13	165,462.71
3.	PREMISES			
		(i)	Polling Places	13,000.00
		(ii)	Postal Voting Centres	3,101.13
		(iii)	Tally Centre	3,832.45
		(iv)	Security Services	852.00
				20,785.58
4.	EQUIPMENT			38,726.94
5.	PRINTING			62,842.51
6.	ADVERTISING			22,210.14
7.	COMMUNICATIONS			
		(i)	Postage	6,767.73
		(ii)	Telephones	3,092.58
				9,860.31
8.	FREIGHT AND CARTAGE			9,944.03
9.	NON VOTERS COSTS			1,769.54
10.	MISCELLANEOUS			3,238.88
				<hr/>
		TOTAL EXPENDITURE		549,943.07
				<hr/>

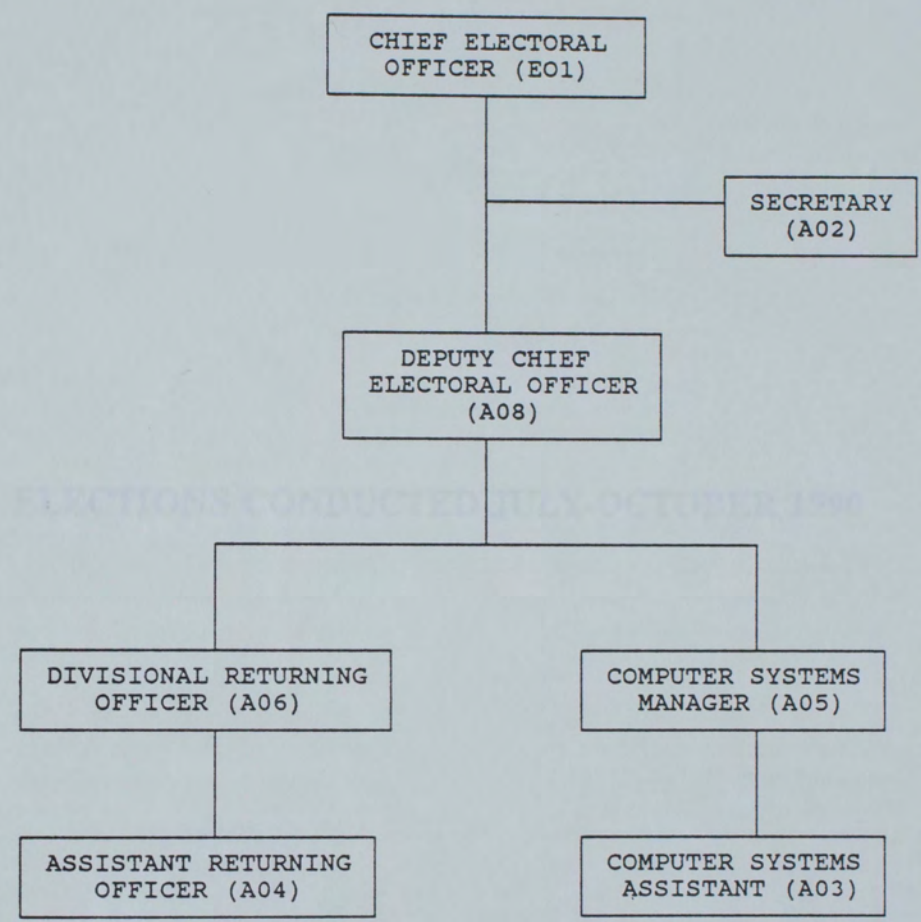
N.T.
ELECTORAL OFFICE



NORTHERN TERRITORY ELECTORAL
OFFICE STAFFING STRUCTURE



N.T. ELECTORAL OFFICE



ELECTION TIMETABLES

	KATHARINE TOWN COUNCIL BY ELECTION	DARWIN CITY COUNCIL BY ELECTION	LEGISLATIVE ASSEMBLY GENERAL ELECTION
WEEK ENDING 22 JULY 1988	WEEK OF POLLING 11 JULY 1988		
WEEK ENDING 29 JULY 1988			
WEEK ENDING 05 AUGUST 1988	WEEK OF POLLING 27 JULY 1988		
WEEK ENDING 12 AUGUST 1988			
WEEK ENDING 19 AUGUST 1988			
WEEK ENDING 26 AUGUST 1988			
WEEK ENDING 02 SEPTEMBER 1988	WEEK OF POLLING 28 AUGUST 1988		
WEEK ENDING 09 SEPTEMBER 1988			
WEEK ENDING 16 SEPTEMBER 1988			
WEEK ENDING 23 SEPTEMBER 1988			
WEEK ENDING 30 SEPTEMBER 1988			
WEEK ENDING 07 OCTOBER 1988			
WEEK ENDING 14 OCTOBER 1988			
WEEK ENDING 21 OCTOBER 1988			
WEEK ENDING 28 OCTOBER 1988			
WEEK ENDING 04 NOVEMBER 1988			
WEEK ENDING 11 NOVEMBER 1988			
WEEK ENDING 18 NOVEMBER 1988			
WEEK ENDING 25 NOVEMBER 1988			
WEEK ENDING 02 DECEMBER 1988			
WEEK ENDING 09 DECEMBER 1988			
WEEK ENDING 16 DECEMBER 1988			
WEEK ENDING 23 DECEMBER 1988			
WEEK ENDING 30 DECEMBER 1988			

ELECTIONS CONDUCTED JULY-OCTOBER 1990

ELECTION TIMETABLES

	KATHERINE TOWN COUNCIL BY-ELECTION	DARWIN CITY COUNCIL BY-ELECTION	LEGISLATIVE ASSEMBLY GENERAL ELECTION
WEEK ENDING 15 JULY 1990	Close of Rolls 11 July 1990		
WEEK ENDING 22 JULY 1990			
WEEK ENDING 29 JULY 1990	Close of Nominations 27 July 1990		
WEEK ENDING 5 AUGUST 1990			
WEEK ENDING 12 AUGUST 1990			
WEEK ENDING 19 AUGUST 1990			
WEEK ENDING 26 AUGUST 1990	Polling Day 25 August 1990		
WEEK ENDING 2 SEPTEMBER 1990	Distribution of Preference 31 August 1990	Close of Rolls 29 August 1990	
WEEK ENDING 9 SEPTEMBER 1990			
WEEK ENDING 16 SEPTEMBER 1990		Close of Nominations 14 September 1990	
WEEK ENDING 23 SEPTEMBER 1990			Redistribution Executive Council Approval 25 September 1990
WEEK ENDING 30 SEPTEMBER 1990			Electors Transferred 27 September 1990
WEEK ENDING 7 OCTOBER 1990			
WEEK ENDING 14 OCTOBER 1990		Polling Day 13 October 1990	Issue of Writ 8 October 1990
WEEK ENDING 21 OCTOBER 1990		Distribution of Preference 19 October 1990	Close of Nominations 16 October 1990
WEEK ENDING 28 OCTOBER 1990			Polling Day 27 October 1990
WEEK ENDING 4 NOVEMBER 1990			Distribution of Preference 2 November 1990

ELECTION DATES

PRINT ISSUES
CLOSE OF ROLLS
7 OCTOBER 1990



7 DAYS

CLOSE OF NOMINATIONS
14 OCTOBER 1990

ELECTION DATES

6 DAYS

HOUSE POLLING
CONTACTS
20 OCTOBER 1990



6 DAYS

ROLLING DAY
27 OCTOBER 1990

ELECTION DATES

WRIT ISSUE CLOSE OF ROLLS
8 OCTOBER 1990



7 DAYS

CLOSE OF NOMINATIONS
16 OCTOBER 1990



5 DAYS

MOBILE POLLING COMMENCES
22 OCTOBER 1990



4 DAYS

POLLING DAY
27 OCTOBER 1990

POSTAL

LEGISLATIVE ASSEMBLY ELECTION 27 OCTOBER 1990

LOCALITY

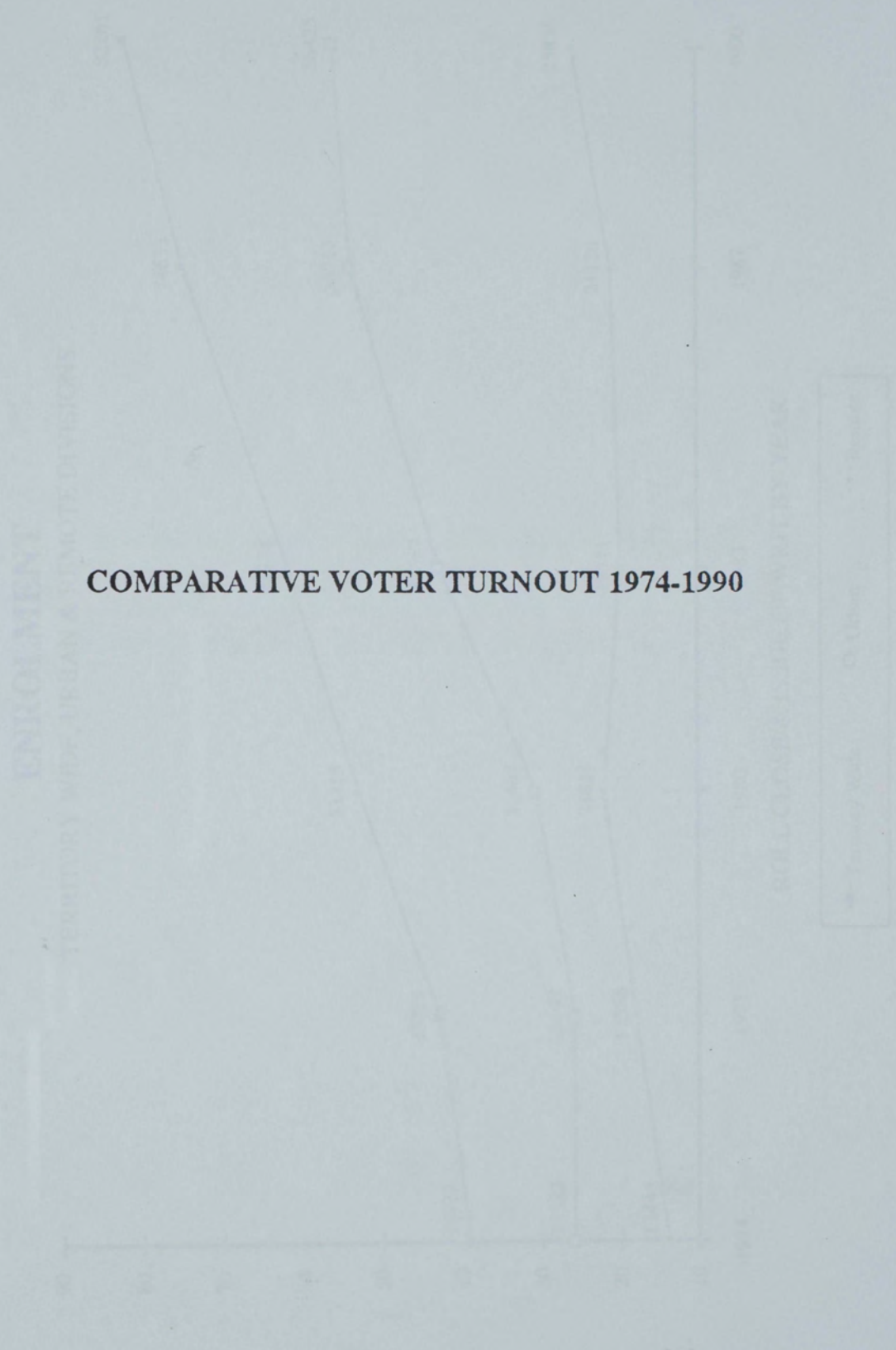
	DARWIN ORALS	DARWIN WRITTEN	KATH ERINE	TENNANT CREEK	NHUL UNBUY	ALICE SPRINGS	BRIS BANE	SYDNEY	MELB OURNE	HOBART	ADEL AIDE	CANBERRA	PERTH	TOTAL
ARAFURA	7	28	0	2	0	0	0	1	0	0	0	0	0	38
ARALUEN	4	40	1	1	0	137	3	0	0	0	9	2	0	197
ARNHEM	5	17	2	0	1	0	0	0	4	0	2	0	0	31
BARKLEY	4	94	5	39	0	10	1	2	0	0	1	1	2	159
BRAITLING	6	46	0	2	0	171	0	2	3	0	7	0	0	237
BRENNAN	115	69	1	0	0	3	1	0	0	0	5	1	2	197
CASUARINA	102	89	1	0	0	3	4	4	2	1	5	1	5	217
FANNIE BAY	131	94	2	0	0	1	4	3	3	0	10	1	3	252
GOYDER	86	215	4	0	0	3	0	1	0	0	1	1	1	312
GREATOREX	7	55	1	1	0	180	5	0	0	0	7	0	1	257
JINGILI	130	83	1	0	1	1	0	2	3	0	2	0	1	224
KARAMA	84	75	1	0	0	1	1	4	0	0	3	1	0	170
KATHERINE	8	87	212	1	0	2	2	0	0	0	5	4	2	323
LEANYER	92	86	2	0	0	3	1	1	2	0	4	2	0	193
MACDONNELL	5	128	0	1	0	82	2	0	0	0	2	0	0	220
MILLNER	83	86	0	0	0	4	2	0	5	0	4	0	0	184
NELSON	86	53	3	0	0	1	0	4	3	0	4	0	2	156
NHULUNBUY	10	42	2	0	69	7	2	0	0	0	0	2	0	134
NIGHTCLIFF	112	80	1	1	0	2	4	2	4	0	11	2	1	220
PALMERSTON	60	48	2	0	0	2	0	1	4	0	3	1	1	122
PORT DARWIN	137	102	2	1	1	5	1	5	3	2	2	3	2	266
SANDERSON	112	101	1	0	1	1	3	1	4	4	1	1	0	230
STUART	2	127	0	1	0	46	0	0	1	0	0	0	0	177
VICTORIA RIVER	13	147	41	5	1	2	1	5	1	1	0	0	0	217
WANGURI	87	73	0	0	0	0	0	1	3	2	0	2	1	169
TOTAL	1488	2065	285	55	74	667	37	39	45	10	88	25	24	4902

LEGISLATIVE ASSEMBLY GENERAL ELECTION

COMPARATIVE ELECTOR TURNOUT

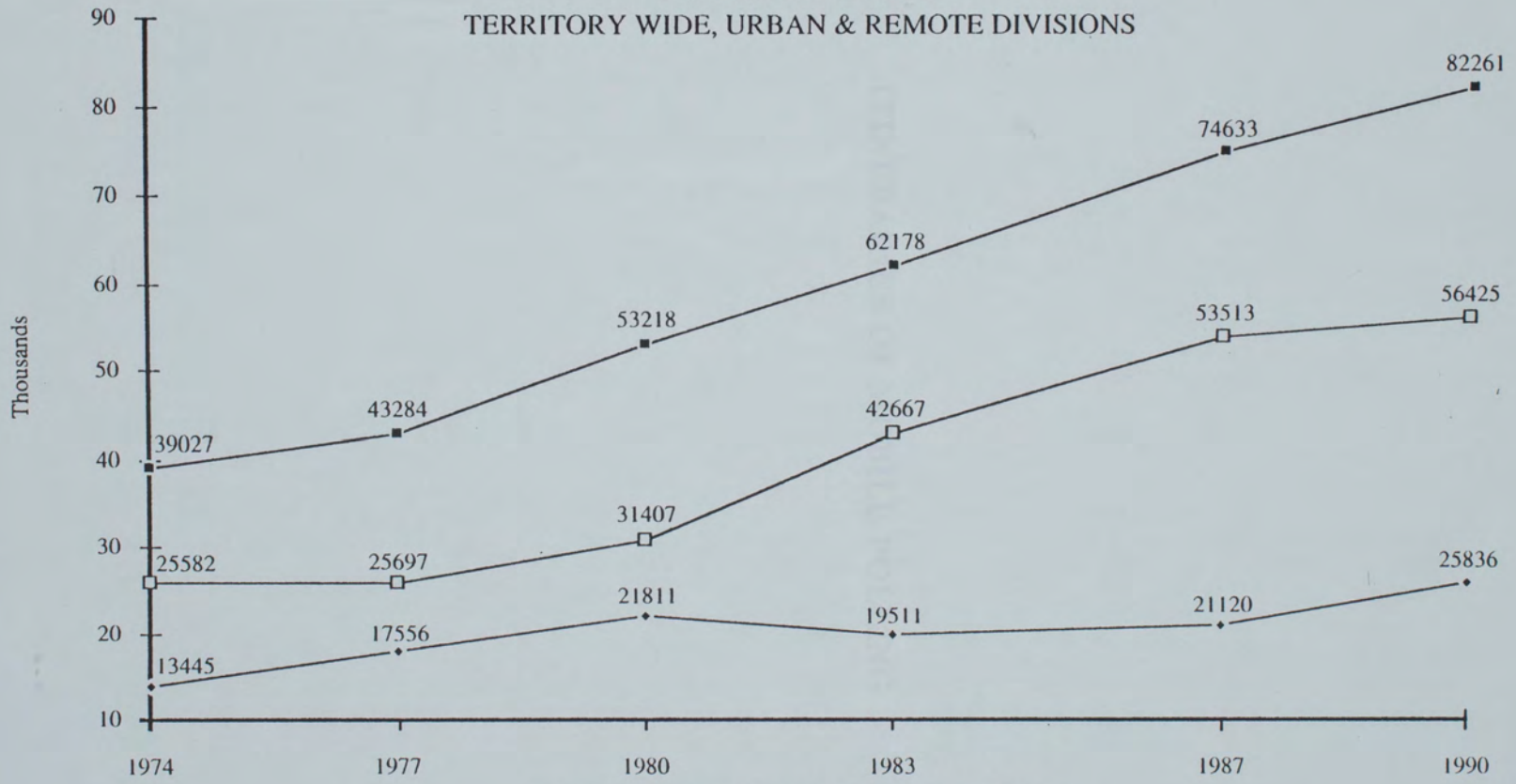
DIVISION	1987 ENROLMENT		VOTER TURNOUT		1990 ENROLMENT		VOTER TURNOUT	
			Number	Percentage			Number	Percentage
ARAFURA	3151		2026	64.30	3352		2273	67.81
ARALUEN	2657		2053	77.27	3406		2936	86.20
ARNHEM	3068		1909	62.22	3156		2089	66.19
BARKLEY	3097		2039	65.84	3216		2608	81.09
BRAITLING	2447		1576	64.41	3167		2616	82.60
BRENNAN					3296		2650	80.40
CASUARINA	3175		2588	81.51	3209		2871	89.47
FANNIE BAY	3058		2223	72.69	3381		2924	86.48
GOYDER					3113		2592	83.26
GREATOREX					3466		2817	81.28
JINGILI	3190		2577	80.78	3515		3042	86.54
KARAMA	3364		2667	79.28	3319		2857	86.08
KATHERINE	2704		1979	73.19	3343		2759	82.53
KOOLPINYAH	2963		2312	78.03				
LEANYER	3388		2649	78.19	3254		2859	87.86
LUDMILLA	2992		1899	63.47				
MACDONNELL	3108		1623	52.22	3246		2242	69.07
MILLNER	2979		2154	72.31	3377		2861	84.72
NELSON					3331		2994	89.88
NHULUNBUY	3366		2315	68.78	3197		2456	76.82
NIGHTCLIFF	3099		2099	67.73	3274		2672	81.61
PALMERSTON	3371		2760	81.87	2988		2499	83.63
PORT DARWIN	2967		1899	64.00	3324		2739	82.40
SADADEEN	2766		1902	68.76				
STUART	2738		1514	55.30	3148		2293	72.84
VICTORIA	2592		1689	65.16	3408		2507	73.56
RIVER								
WANGURI	2864		2519	87.95	3412		3037	89.01
TOTAL	74633		53127	71.81	82261		67117	81.59

COMPARATIVE VOTER TURNOUT 1974-1990

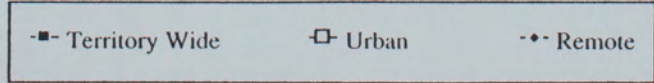


ENROLMENT

TERRITORY WIDE, URBAN & REMOTE DIVISIONS



ROLL CLOSE & ISSUE OF WRIT BY YEAR



MOBILE POLLING SCHEDULE										
DIVISION: Arafura			TEAM MEMBERS: Gwen Daye, Joe Deloryn				TEAM NO.: 1			
TRAVEL & CONTACTS						POLLING				
DAY & DATE	MODE	DEPART FROM	TIME	ARRIVE AT	TIME	REMARKS	POLLING PLACE	POLLING HOURS	ENROL -MENT	REMARKS
Tues 23/10	Air	Darwin	0700	Gunbalunya	0800		School	0830-1300	298	
		Gunbalunya	1330				Crashed Rtnd to Darwin that night			
Thurs 25/10	Air	Darwin	0700	Waruwi	0745		Council Off.	0815-1215	223	
		Waruwi	1245	Minjilang	1315		Hall	1345-1615	127	
		Minjilang	1645	Darwin	1715					
Fri 26/10	Air	Darwin	0700	Milikapiti	0745		Council Off.	0830-1200	276	
		Milikapiti	1230	Pularumpi	1300		Council Off.	1330-1600	144	
		Pularumpi	1630	Nguiu	1645					
Sat 27/10		Nguiu Static					Council Off.	0800-1800	666	
Sun 28/10		Nguiu	1715	Darwin	1800	Commercial Flight HS205				

MOBILE POLLING SCHEDULE										
ELECTION: 27 October 1990			TEAM LEADER: Mac Whittaker							
DIVISION: Arafura			TEAM MEMBERS: Christine Kennedy, John Caffeekey					TEAM NO.: 2		
TRAVEL						POLLING				
DAY & DATE	MODE	DEPART FROM	TIME	ARRIVE AT	TIME	REMARKS	POLLING PLACE	POLLING HOURS	ENROL -MENT	REMARKS
Sun	Air	Darwin	1200	Maningrida	1330					
Mon	Heli	Maningrida	0800	Marrkolidban	0815		Community	0845-0945	24	
22/10		Marrkolidban	1015	Gurrhgurr	1030		Community	1045-1115	7	
		Gurrhgurr	1130	Gumarrinbang	1145		Community	1200-1245	14	
		Gumarrinbang	1300	Manmoyi	1315		Community	1330-1430	23	
		Manmoyi	1445	Gamarrgawon	1500		Community	1515-1545	7	
		Gamarrgawon	1600	Mumeka	1615		Community	1630-1715	25	
		Mumeka	1730	Maningrida	1745					
Tues	Heli	Maningrida	0800	Nangark	0815		Community	0845-0915	3	
23/10		Nangark	0930	Ngankorlord	0945		Community	1015-1045	13	
		Ngankorlord	1100	Borlkdjam	1115		Community	1145-1215	6	
		Borlkdjam	1230	Buluhkaduru	1245		Community	1315-1415	26	
		Buluhkaduru	1430	Gochanjiny-Jirra	1445		Community	1515-1615	32	
		Gochanjiny-Jirra	1630	Maningrida	1645					

MOBILE POLLING SCHEDULE										
TRAVEL						POLLING				
DAY & DATE	MODE	DEPART FROM	TIME	ARRIVE AT	TIME	REMARKS	POLLING PLACE	POLLING HOURS	ENROL -MENT	REMARKS
Wed 24/10	Heli	Maningrida	0800	Ji-balbal	0815		Community	0830-0900	4	
		Ji-balbal	0915	Gamardi	0930		Community	0945-1015	13	
		Gamardi	1030	Gartji	1045		Community	1115-1200	16	
		Gartji	1215	Ji-marda	1245		Community	1315-1415	33	
		Ji-marda	1445	Gupanga	1500		Community	1515-1600	15	
		Gupanga	1630	Maningrida	1700					
Thurs 25/10	Heli	Maningrida	0800	Raminging	0900		School	1000-1500	308	
		Raminging	1545	Maningrida	1645					
Fri 26/10		Maningrida	0800	Malyangank	0915		Community	0945-1030	13	
		Malyangank	1100	Galawgapin	1130		Community	1200-1230	2	
		Galawgapin	1300	Maningrida	1345					
Sat 27/10		Maningrida Static					Council Off	0800-1800	608	
							To be Collected by			
Sun 28/10		Maningrida	1130	Darwin	1300		Nhulunbuy Regional Co-ordinator with			
							Team 5			

MOBILE POLLING SCHEDULE

TRAVEL		MOBILE POLLING SCHEDULE					POLLING			
DIVISION: Arnhem		TEAM MEMBERS: Pat Dargan, Jannine Bampton							TEAM NO.: 4	
DAY & DATE	MODE	DEPART FROM	TIME	ARRIVE AT	TIME	REMARKS	POLLING PLACE	POLLING HOURS	ENROL -MENT	REMARKS
Mon 22/10	4WD	Darwin Jilkmिंगgan	0700 1600	Jilkmिंगgan Mataranka	1300 1630		School	1330-1530	73	
Tues 23/10		Mataranka Beswick Barunga	0700 1230 1715	Beswick Barunga Mataranka	0830 1300 1815		Council Off. Adult Ed Cent	0900-1200 1330-1700	164 282	
Wed 24/10		Mataranka Hodgson River Hodgson Downs	0700 1200 1600	Hodgson River Hodgson Downs Roper Bar	1030 1300 1800		Nr Homestead Comm. Shed	1100-1145 1330-1530	20 91	
Thurs 25/10		Roper Bar Urapunga Badawarka Costello	0730 1030 1300 1600	Urapunga Badawarka Costello Roper Bar	0745 1100 1430 1645		Store School Community Nr Inn	0800-1000 1130-1230 1445-1530 1700-1730	54 29 17 5	

MOBILE POLLING SCHEDULE										
DIVISION: Nhulunbuy			TEAM MEMBERS: Julie Gallagher, Neville Howlett					TEAM NO.: 5		
TRAVEL						POLLING				
DAY & DATE	MODE	DEPART FROM	TIME	ARRIVE AT	TIME	REMARKS	POLLING PLACE	POLLING HOURS	ENROL -MENT	REMARKS
Sun 21/10	Chart	Darwin	1200	Gove	1500					
Mon 22/10	Heli	Gove	0700	Djarrakpi	0800		Community	0830-0900	13	
		Djarrakpi	0930	Baniyala	0945		School	1015-1145	54	
		Baniyala	1215	Gangan	1230		School	1300-1415	42	
		Gangan	1445	Wandawuy	1500		Community	1530-1630	37	
		Wandawuy	1700	Gove	1730					
Tues 23/10	Heli	Gove	0700	Bukudal	0745		Community	0815-0845	2	
		Bukudal	0900	Birany Birany	0915		School	0930-1030	23	
		Birany Birany	1100	Gurrumurru	1130		School	1200-1315	34	
		Gurrumurru	1345	Dhalinbuy	1400		Community	1430-1530	29	
		Dhalinbuy	1545	Gove	1615					
Wed 24/10	Heli	Gove	0730	Bawaka	0800		Community	0800-0830	4	
		Bawaka	0900	Bremer Island	0930		Community	1000-1100	20	
		Bremer Island	1130	Yangumbi	1145		Community	1215-1315	1	
		Yangumbi	1345	Yududu	1415		Community	1445-1545	20	

MOBILE POLLING SCHEDULE

TRAVEL		MOBILE POLLING SCHEDULE					POLLING			
DAY & DATE	MODE	DEPART FROM	TIME	ARRIVE AT	TIME	REMARKS	POLLING PLACE	POLLING HOURS	ENROL -MENT	REMARKS
		Yududu	1600	Gove	1615					
Thurs 25/10	Heli	Gove	0730	Rorru	0815		School	0845-0915	9	
		Rorru	0945	Matamata	1000		School	1030-1130	24	
		Matamata	1200	Mapuru	1230		School	1300-1400	18	
		Mapuru	1430	Galiwinku	1500					
Fri 26/10	Road	Galiwinku	0700	Banthula	0800		Community	0830-0930	10	
		Banthula	1000	Gowra	1030		Community	1100-1200	30	
		Gowra	1230	Djurranalpi	1300		Community	1330-1430	5	
		Djurranalpi	1430	Galiwinku	1500					
Sat 27/10		Galiwinku Static					Adult Educat. Centre	0800-1800	490	
Sun 28/10		Galiwinku	0930	Darwin	1300		Charter-Nhulunbuy-Galiwinku- Maningrida-Darwin			

MOBILE POLLING SCHEDULE

MOBILE POLLING SCHEDULE										
DIVISION: Goyder			TEAM MEMBERS: Bryan Harty, Heather Davey					TEAM NO.: 6		
TRAVEL						POLLING				
DAY & DATE	MODE	DEPART FROM	TIME	ARRIVE AT	TIME	REMARKS	POLLING PLACE	POLLING HOURS	ENROL -MENT	REMARKS
Mon 22/10	Car	Darwin	0700	Gunn Point	0830		Prison	0900-1130	60	Pris-
		Gunn Point	1200	Beatrice Hill	1330		Prison	1400-1530	24	oners
		Beatrice Hill	1600	Bark Hut	1630					
Tues 23/10		Bark Hut	0930	Kakadu Holiday	1015		Nr Store	0800-0900	3	
		Kakadu Holiday V	1300	Nourlangie	1400		Nr Hotel	1045-1230	19	
		Nourlangie	1530	Cooinda	1600		Community	1430-1500	7	
							Nr Motel	1630-1715	6	
Wed 24/10		Cooinda	0730	Patonga	0800		Old Airstrip	0830-0930	20	
		Patonga	1000	Spring Peak	1015		Nr Homestead	1045-1115	5	
		Spring Peak	1145	Cox Peninsula	1600		Nr Store	1630-1830	29	Ferry
		Cox Peninsula	1835	Mandorah	1840					Ar 6.30
Thurs 25/10		Mandorah	0715	Belyuen	0730		Community	0800-1030	133	
		Belyuen	1100	Lake Bennett	1230		Nr Store	1300-1330	8	
		Lake Bennett	1400	Adelaide River	1430		School	1500-1730	98	

MOBILE POLLING SCHEDULE										
DIVISION: Victoria River			TEAM MEMBERS: Catherine Harrison, David Althorp					TEAM NO.: 7		
TRAVEL						POLLING				
DAY & DATE	MODE	DEPART FROM	TIME	ARRIVE AT	TIME	REMARKS	POLLING PLACE	POLLING HOURS	ENROL -MENT	REMARKS
Mon 22/10	Air	Darwin	0715	Timber Creek	0830		School	0900-1100	110	
		Timber Creek	1130	Bulla Camp	1145		Community	1215-1415	78	
		Bulla Camp	1430	Amanbidji	1500		Community	1530-1630	37	
		Amanbidji	1700	VRD Station	1730					
Tues 23/10	Air			VRD Station			Station	0800-0900	44	
		VRD Station	0930	Yarralin	0945		School	1015-1245	97	
		Yarralin	1315	Pigeon Hole	1330		Community	1400-1445	15	
		Pigeon Hole	1505	Wave Hill	1530		Nr Homestead	1600-1645	13	
		Wave Hill	1600	VRD Station	1700					
Wed 24/10	Air	VRD Station	0730	Dagaragu	0800		Comm Hall	0830-1200	107	
		Dagaragu	1230	Kalkaringi	1300		Council Off.	1330-1700	128	
		Kalkaringi	1730	VRD Station	1815					
Thurs 25/10	Air	VRD Station	0745	Lajamanu	0830		School	0915-1515	336	
		Lajamanu	1545	VRD Station	1645					

MOBILE POLLING SCHEDULE										
DIVISION: Victoria River				TEAM MEMBERS: Sandra Skelton, Greg Jones				TEAM NO.: 8		
TRAVEL						POLLING				
DAY & DATE	MODE	DEPART FROM	TIME	ARRIVE AT	TIME	REMARKS	POLLING PLACE	POLLING HOURS	ENROL -MENT	REMARKS
Sun 21/10	4WD	Darwin	1230	Daly River Inn	1500					
Mon 22/10		Daly River Inn	0715	Nauiyu Nambiyu	0730		Council Off.	0800-1100	177	
		Nauiyu Nambiyu	1130	Wooliana	1145		Community	1215-1310	35	
		Wooliana	1330	Tipperary	1430		Nr Homestead	1500-1600	42	
		Tipperary	1615	Katherine	1900					
Tues 23/10		Katherine	0700	Scott Creek	0745		School	0815-0915	18	
		Scott Creek	0915	Delamere Stn	1115		Nr Homestead	1145-1215	6	
		Delamere Stn	1245	Killarney	1415		Nr Homestead	1445-1530	13	
		Killarney	1600	Top Springs	1730					
Wed 24/10				Top Springs			Nr Store	0800-0830	12	
		Top Springs	0900	Montejinni	0915		Community	0945-1015	10	
		Montejinni	1045	Dunmurra	1215		Nr Roadhouse	1245-1330	6	
		Dunmurra	1400	Newcastle Waters	1445		School	1500-1600	34	
		Newcastle Waters	1615	Elliott	1715					

MOBILE POLLING SCHEDULE										
DIVISION: Barkly		TEAM MEMBERS: Garry Tillman, Narelle King						TEAM NO.: 9		
TRAVEL		POLLING								
DAY & DATE	MODE	DEPART FROM	TIME	ARRIVE AT	TIME	REMARKS	POLLING PLACE	POLLING HOURS	ENROL -MENT	REMARKS
Mon 22/10	Air	Darwin	0700	Nutwood Downs	0900		Nr Homestead	0930-1000	8	
		Nutwood Downs	1030	Beetaloo	1100		Nr Homestead	1130-1200	5	
		Beetaloo	1230	Ucharonidge	1300		Nr Homestead	1330-1400	6	
		Ucharonidge	1430	Borrooloola	1515					
Tues 23/10	Air	Borrooloola	0700	Robinson River	0730		School	0800-1000	61	
		Robinson River	1030	Walhallow	1115		Nr Homestead	1145-1215	14	
		Walhallow	1245	Mallapunyah Sps	1315		Nr Homestead	1345-1415	9	
		Mallapunyah Sps	1445	Kiana	1500		School	1530-1630	9	
		Kiana	1645	Borrooloola	1715					
Wed 24/10	Air	Borrooloola	0700	Wologorang	0745		Nr Strip	0815-0900	21	
		Wologorang	0930	Dry Creek	0945		Community	1015-1115	16	
		Dry Creek	1145	Nudgerrburra	1200		Store	1230-1330	21	
		Nudgerrburra	1400	Wangkalinji	1415		Community	1445-1545	11	
		Wangkalinji	1615	Borrooloola	1715					

MOBILE POLLING SCHEDULE										
DIVISION: Barkly		TEAM MEMBERS: Nigel Skelton, Helen Bolger							TEAM NO.: 11	
TRAVEL						POLLING				
DAY & DATE	MODE	DEPART FROM	TIME	ARRIVE AT	TIME	REMARKS	POLLING PLACE	POLLING HOURS	ENROL -MENT	REMARKS
Sun 21/10		Alice Springs	0800	Tennant Creek	1300		(Team Leader Only)			
Mon 22/10	FWD	Tennant Creek	0700	McLaren Creek	0800		School	0830-0930	28	
		McLaren Creek	1000	Tara Community	1130		School	1200-1430	80	
		Tara Community	1500	Wycliffe Well	1600		Nr Store	1630-1730	7	
Tues 23/10		Wycliffe Well	0700	Murray Downs	0815		School	0830-1030	44	
		Murray Downs	1100	Ali Curung	1145		School	1200-1700	249	
		Ali Curung	1730	Wycliffe Well	1800					
Wed 24/10		Wycliffe Well	0700	Canteen Creek	1030		School	1100-1230	42	
		Canteen Creek	1300	Epenarra	1400		School	1430-1630	53	
		Epenarra	1700	Wauchope	1900					
Thurs 25/10		Wauchope	0730	Warrego	0930		Comm Hall	1000-1300	165	
		Warrego	1330	Munglawurra	1415		Community	1445-1530	18	
		Munglawurra	1600	Tennant Creek	1700					

MOBILE POLLING SCHEDULE

DIVISION: Stuart

TEAM MEMBERS: Laurie Berryman, Bronya Dineen

TEAM NO.: 13

TRAVEL							POLLING			
DAY & DATE	MODE	DEPART FROM	TIME	ARRIVE AT	TIME	REMARKS	POLLING PLACE	POLLING HOURS	ENROL -MENT	REMARKS
Mon 22/10	Air	Alice Springs	0715	Alpurrurulam	0915		Women Centre	0945-1300	135	
		Alpurrurulam	1330	Alice Springs	1530					
Tues 23/10	Air	Alice Springs	0700	Laramba/Napperb	0745		Store	0815-1115	135	
		Laramba/Napperby	1215	Mt Allan	1245		School	1315-1545	83	
		Mt Allan	1615	Alice Springs	1730					
Wed 24/10	Road	Alice Springs	0700	Ross River H/St	0800		Nr Homestead	0830-0900	11	
	FWD	Ross River H/St	0930	Santa Teresa	1200		Comm Hall	1230-1600	223	
		Santa Teresa	1630	Alice Springs	1800					
Sat 27/10		Braitling North Static		(Static Staff List)			Indoor Cricket Centre	0800-1800		

MOBILE POLLING SCHEDULE										
DIVISION: Stuart			TEAM MEMBERS: Raymond Morton, Patricia Balmer						TEAM NO.: 14	
TRAVEL						POLLING				
DAY & DATE	MODE	DEPART FROM	TIME	ARRIVE AT	TIME	REMARKS	POLLING PLACE	POLLING HOURS	ENROL -MENT	REMARKS
Mon	Road	Alice Springs	0800	McGrath Ck	0830		Community	0900-0930	14	
22/10	FWD	McGrath Ck	1000	Alcoota	1200		Community	1230-1400	50	
		Alcoota	1430	Harts Range	1530					
Tues		Harts Range	0700	Mt Swan	0815		Homestead	0845-0945	15	
23/10		Mt Swan	1015	Atitjere	1100		Womens Centre	1230-1500	73	
		Atitjere	1515	Harts Range	1530					
Wed		Harts Range	0700	Jervois	1000		Nr Homestead	1015-1045	2	
24/10		Jervois	1100	Bonya Baikal	1130		Community	1200-1330	36	
		Bonya Baikal	1530	Jinka	1500		Nr Homestead	1515-1545	3	
		Jinka	1600	Huckitta	1630		Nr Homestead	1645-1715	3	
		Huckitta	1730	Harts Range	1800					
Thurs		Harts Range	0700	Mt Riddock	0800		Nr Homestead	0830-0900	10	
25/10		Mt Riddock	0930	Bond Springs	1200		Nr Homestead	1230-1300	10	
		Bond Springs	1330	Alice Springs	1400					

MOBILE POLLING SCHEDULE										
DIVISION: Macdonnell			TEAM MEMBERS: Gary Lane, Bonny Moss				TEAM NO.: 16			
TRAVEL						POLLING				
DAY & DATE	MODE	DEPART FROM	TIME	ARRIVE AT	TIME	REMARKS	POLLING PLACE	POLLING HOURS	ENROL -MENT	REMARKS
Mon 22/10	Air	Alice Springs	0700	Kulgera	0800		Cvan Pk	0830-0900	20	
		Kulgera	0930	Finke	1000		Store	1030-1300	111	
		Finke	1330	Titjikala	1400		Womens Centre	1430-1700	98	
		Titjikala	1730	Alice Springs	1800					
Tues 23/10	Road	Alice Springs	0730	Iwupataka	0800		Community	0830-0900	28	
		Iwupataka	0930	Ukaka	1300		Shed	1330-1430	22	
		Ukaka	1500	Lilla/Watarrka N	1615		New Ranger St	1645-1745	33	
		Lilla	1800	King Creek	1810		Overnight			
Wed 24/10	Road	King Creek	0700	Imanpa	1015		Office	1045-1300	67	
		Imanpa	1330	Mt Ebenezer	1400		Wst Rest Ent	1430-1500	4	
		Mt Ebenezer	1530	Yulara	1715					
Thurs 25/10	Air	Yulara	0700	Kintore	0800		Shed	0830-1130	167	
		Kintore	1200	Docker River	1300		Office	1330-1630	188	
		Docker River	1700	Yulara	1800					

MOBILE POLLING SCHEDULE										
DIVISION: Macdonnell			TEAM MEMBERS: Alastair Doole, Wendy O'Brien						TEAM NO.: 18	
TRAVEL				POLLING						
DAY & DATE	MODE	DEPART FROM	TIME	ARRIVE AT	TIME	REMARKS	POLLING PLACE	POLLING HOURS	ENROL -MENT	REMARKS
Mon 22/10		Alice Springs	0700	Ikunji	1030		School	1100-1300	48	
		Ikunji	1330	Glen Helen	1400		Cvan Pk	1430-1500	4	
Tues 23/10		Glen Helen	0700	Mt Leibig	1030		Office	1100-1400	127	
		Mt Leibig	1430	Warren Ck	1500		Community	1515-1545	10	
		Warren Ck	1600	Glen Helen	1930					
Wed 24/10		Glen Helen	0700	Papunya	0930		School	1000-1330	193	
		Papunya	1400	Mbungghara	1445		Community	1500-1545	19	
		Mbungghara	1600	Alice Springs	1845					
Thurs 25/10		reserve team								
Fri 26/10		Alice Springs	0915	Old Timers	0930		Home	1000-1130	68	
Sat 27/10		Yirara Static		Static Staff Not Mobile Staff			Yirara Coll.	0800-1800		
							Needle Work Room			

APPENDIX I

WEST DIVISION OF ARAFURA

MOBILES	1999 ELECTION			2007 ELECTION		
	NO. ENROLLED	NO. VOTES	PERCENT VOTES	NO. ENROLLED	NO. VOTES	PERCENT VOTES
UNSAISONIA	298	178	59	271	168	62
WITIM POINS	2	3	88			
WILKINSONI	147	167	114	156	167	107
WILSONI	223	181	81	131	81	62
WILSONIANG	127	94	74	103	84	81
WILSONIANGI	776	217	28	188	117	62
WILSONIANGI	144	120	83	100	120	120
WILSONIANGI	15	4	27			
WILSONIANGI	18	3	17			
WILSONIANGI				24	18	75
WILSONIANGI				2	3	150
WILSONIANGI				2		
WILSONIANGI	14	11	79	11	7	63
WILSONIANGI		2	100			
WILSONIANGI	16	11	69	13	11	85
WILSONIANGI	23	11	48	33		
WILSONIANGI	7	8	114			
WILSONIANGI						
WILSONIANGI						
WILSONIANGI	4	3	75	4	3	75
WILSONIANGI	16	7	44			
WILSONIANGI	10	18	180	11	10	91
WILSONIANGI	4	8	200	12	8	67
WILSONIANGI	13	28	215	18	7	39
WILSONIANGI	12	12	100	18	12	67
WILSONIANGI	15	2	13	24	7	29
WILSONIANGI	302	208	69	218	177	81
WILSONIANGI	11	11	100			
WILSONIANGI	2					
WILSONIANGI	18	8	44			
WILSONIANGI	608	247	40	478	287	60
WILSONIANGI	681	320	47	572	381	67

VOTES CAST AT MOBILE POLLING PLACES

ROLLED AS STATED IN 1999 AND MOBILE IN 2007

DIVISION OF ARAFURA

MOBILES	1990 ELECTION			1987 ELECTION		
	NO. ENROLLED	ORD VOTES	SECT VOTES	NO. ENROLLED	ORD VOTES	SECT VOTES
GUNBALUNYA	298	174	27	271	146	N O R E C O R D K E P T
SMITH POINT	2	3	15			
MILINGIMBI	347	167	23	358	147	
WARRUWI	223	161	14	133	82	
MINJILANG	127	84	4	108	84	
MILIKAPITI	276	217	14	188	132	
PULARUMPI	144	120	18	160	120	
NABARLEK	5	4	17			
MURGENELLA	18	2	2			
NAMOKARDARBU				6	1	
BOTGARDI				4	3	
BARNAMARRAKKAKANDRA				5	-	
MARRKOLIDBAN	24	11	-	23	7	
GURRHGURR	7	2	-			
GUMARRINBANG	14	1	-	23	13	
MANMOYI	23	5	-	33	5	
GAMARRGAWON	7	5	-			
MUMKA	25	-	-	34	15	
NANGARK	3	8	-			
NGANKORLORD	13	23	-	14	8	
BORLKDJAM	6	9	-	4	6	
BULUHKADURU	26	7	1			
GOCHANJINY-JIRRA	32	35	-	27	10	
JI-BALBAL	4	9	1	12	6	
GAMARDI	13	20	-	18	9	
JI-MARDA	33	32	3	35	13	
GUPANGA	15	5	-	24	-	
RAMINGINING	308	209	13	210	129	
MALYANGANK	13	11	-			
GALAWGAPIN	2	-	-			
GARTJI	16	5	-			
* MANINGRIDA	608	267	16	490	263	
* NGUIU	666	550	45	572	481	

* POLLED AS STATIC IN 1990 AND MOBILE IN 1987

DIVISION OF ARNHEM

MOBILES	1990 ELECTION			1987 ELECTION		
	NO. ENROLLED	ORD VOTES	SECT VOTES	NO. ENROLLED	ORD VOTES	SECT VOTES
BICKERTON IS	43	48	6			
BULMAN	98	70	5	50	56	
GAPUWIYAK	268	88	22	189	96	N
DOINTJI	29	3	-	?	6	O
MT. CATT	17	13	1			
WALKER RIVER	2	12	2			
WUYAGIBA	4	4	-			R
NUMBULWAR	232	141	4	213	135	E
UMBAKUMBA	191	135	7	197	115	C
ROPER VALLEY				30	-	O
JILKMINGGAN	73	19	-	53	38	R
BESWICK	164	117	8	139	71	D
BARUNGA	282	156	11	228	107	
HODGSON RIVER	20	20	1			
HODGSON DOWNS	91	65	7	56	27	K
URAPUNGA	54	31	1	45	27	E
BADAWARKA	29	8	-	20	10	P
COSTELLO	17	2	-			T
ROPER BAR	5	-	5			
NAMILAWIRRI	3	-	-			
WANMARI	3	-	-			
EVA VALLEY	23	24	14	25	12	
* NGUKURR	361	243	31	346	199	

* POLLED AS STATIC IN 1990 AND MOBILE IN 1987

DIVISION OF BARKLY

MOBILES	1990 ELECTION			1987 ELECTION		
	NO. ENROLLED	ORD VOTES	SECT VOTES	NO. ENROLLED	ORD VOTES	SECT VOTES
NUTWOOD DWNS	8	7	-	19	8	N O
BEETALOO	5	-	-	20	-	
UCHARONIDGE	6	5	5			
ROBINSON RVR	61	37	5	38	21	
WALHALLOW	14	20	3			
MALLAPUNYAH SPS	9	9	-			
KIANA	9	9	3			
WOLOGORANG	21	8	1			
DRY CREEK	16	11	2			
NUDGERRBURRA	21	17	-			
WANGKALINJI	11	-	-			R E C O R D
McARTHUR RVR	14	7	4			
CAPE CRAWFORD	5	8	-			
MANANGOORA	8	14	2			
MINYALLINI	8	4	4			
WANDANGULA	12	21	1			
ARRUWURRU STN	9	5	2			
ALROY DOWNS	29	14	-	30	12	
AUSTRAL DOWNS	7	3	-			
AVON DOWNS	16	9	2			
ALEXANDRIA	20	11	2	33	7	
BRUNETTE DWNS	25	27	5	44	17	
BARKLY H/STEAD	7	4	-			
ROCKHAMPTON DWNS	60	7	2	54	18	
LIKARTPARTA	2	7	-			
T/C HOSPITAL & NURSING HOME	-	5	3			
McLAREN CREEK	28	29	8			
TARA COMMUNITY	80	45	4	66	46	
WYCLIFFE WELL	7	10	6	19	7	
MURRAY DWNS	44	18	5	67	43	
ALI CURUNG	249	186	37	276	116	
CANTEEN CRK	42	33	9			
EPENARRA	53	33	3	31	27	
WARREGO	165	107	-	165	81	
MUNGALAWURRA	18	-	-			
PAWRINJI/ KUNYUNGU	19	9	3			
* BORROLOOLA	308	247	49	303	170	

* POLLED AS STATIC IN 1990 AND MOBILE IN 1987

DIVISION OF BRAITLING

MOBILES	1990 ELECTION			1987 ELECTION		
	NO. ENROLLED	ORD VOTES	SECT VOTES	NO. ENROLLED	ORD VOTES	SECT VOTES
HETTI PERKINS HOME MOBILE	6	-	-			

DIVISION OF BRENNAN

MOBILES	1990 ELECTION			1987 ELECTION		
	NO. ENROLLED	ORD VOTES	SECT VOTES	NO. ENROLLED	ORD VOTES	SECT VOTES
BERRIMAH PRISON MOBILE	30	8	51			

DIVISION OF GOYDER

MOBILES	1990 ELECTION			1987 ELECTION		
	NO. ENROLLED	ORD VOTES	SECT VOTES	NO. ENROLLED	ORD VOTES	SECT VOTES
GUNN POINT	-	-	7			N
BEATRICE HILL	2	1	12			O
BARK HUT	3	9	9			
KAKADU HOL V	19	10	1			R
NOURLANGIE	7	-	-			E
COOINDA	6	13	8			C
PATONGA	20	11	3			O
SPRING PEAK	5	4	-			R
COX PENINSULA	29	22	4			D
BELYUEN	133	96	2	114	75	
LAKE BENNETT	8	4	-			K
ADELAIDE RVR	98	55	17	71	66	E
GOODALL MINE	18	14	5			P
MOLINE MINE	-	9	11			T

DIVISION OF GREATORSEX

MOBILES	1990 ELECTION			1987 ELECTION		
	NO. ENROLLED	ORD VOTES	SECT VOTES	NO. ENROLLED	ORD VOTES	SECT VOTES
A/S HOSPITAL	-	-	49			
A/S PRISON	-	1	44			

XEROX DIVISION OF KATHERINE

MOBILES	1990 ELECTION			1987 ELECTION		
	NO. ENROLLED	ORD VOTES	SECT VOTES	NO. ENROLLED	ORD VOTES	SECT VOTES
KATH HOSPITAL	-	6	26			
OLD PIONEERS HM	-	10	2			
RED CROSS HOME	-	3	2			

DIVISION OF MACDONNELL

MOBILES	1990 ELECTION			1987 ELECTION		
	NO. ENROLLED	ORD VOTES	SECT VOTES	NO. ENROLLED	ORD VOTES	SECT VOTES
KULGERA	20	17	1			
FINKE	111	58	10	76	55	
TITJIKALA	98	44	5	75	39	
IWUPATAKA	28	19	7	51	37	N
WALLARA R /UKAKA	22	2	2			O
LILLA/WATARRKA N	33	19	1			
IMANPA	67	38	1	70	40	
MT EBENEZER	4	1	3			R
KINTORE	167	119	10	191	132	E
DOCKER RIVER	188	126	8	199	129	C
MUTITJULU	112	70	9	100	57	O
						R
AREYONGA	104	91	2	85	90	D
IPOLEA	18	15	-			
WALLACE ROCKHOLE	46	35	3	25	18	
WEST WATERHOUSE	12	5	-			K
						E
IKUNJI	48	49	12	74	33	P
GLEN HELEN	4	6	4			T
MT LEIBIG	127	50	13			
WARREN CRK	10	-	-			
PAPUNYA	193	145	8	533	165	
MBUNGHARA	19	14	-			
OLD TIMERS HOME	68	34	6			
* HERMANBERG	333	226	25	364	194	
* YULARA	315	176	31	195	62	

* POLLED AS STATIC IN 1990 AND MOBILE IN 1987

DIVISION OF NHULUNBUY

MOBILES	1990 ELECTION			1987 ELECTION		
	NO. ENROLLED	ORD VOTES	SECT VOTES	NO. ENROLLED	ORD VOTES	SECT VOTES
DJARRAKPI	13	4	-			
BANIYALA	54	20	2	40	21	
GANGAN	42	23	-	28	18	N
WANDAWUY	37	17	2	25	24	O
BUKUDAL	2	-	-			
BIRANY BIRANY	23	13	-	20	-	
GURRUMURRU	34	23	2	30	9	R
DHALINBUY	29	4	-	22	8	E
BAWAKA	4	3	-			C
BREMER ISLAND	20	3	-			O
YANGUMBI	4	3	-			R
YUDUDU	20	13	2			D
RORRU	9	-	-			
MATAMATA	24	-	-	?	8	
MAPURU	18	6	3			
GALIWINKU HOSP		2	1			K
BANTHULA	10	13	2			E
GOWRA	30	-	-			P
DJURRANALPI	5	2	-			T
GOVE HOSPITAL		7	3			
NABALCO		97	9			
* GALIWINKU	490	274	28	342	196	

* POLLED AS STATIC IN 1990 AND MOBILE IN 1987

DIVISION OF STUART

MOBILES	1990 ELECTION			1987 ELECTION		
	NO. ENROLLED	ORD VOTES	SECT VOTES	NO. ENROLLED	ORD VOTES	SECT VOTES
AILERON	38	28	1	28	1	
STIRLING/WILORA	83	57	9	64	29	N
WILLOWRA	176	131	14	109	82	O
ANNINGIE	14	6	-	40	11	
TI TREE STN	72	28	-) 165	84	R
PMARA JUTUNTA	87	58	2			
TI TREE	52	44	6) 53	32	E
PINE HILL	8	5	1			
NYRIPPI	83	81	8			O
YUENDUMU SORRY C	-	20	3			R
ALPURRURULAM	135	97	9	50	58	D
LARAMBA/NAPPERBY	135	79	8	122	69	
MT ALLAN	83	66	1	83	56	
ROSS RIVER H/ST	11	7	-			K
SANTA TERESA	223	142	18	272	152	E
McGRATH CRK	14	4	3			P
ALCOOTA	50	36	8	44	30	T
MT SWAN	15	14	10	20	10	
ATITJERE	73	40	9	35	40	
JERVOIS	2	2	-			
BONYA BAIKAL	36	37	7	?	21	
JINKA	3	2	-			
HUCKITTA	3	3	-			
MT RIDDOCK	10	8	-			
BOND SPGS	10	2	-			
MULGA BORE	25	31	2			
ATARTINGA	6	2	-			
ADELAIDE BORE	19	7	3			
AMPILATWATJA	65	58	11			
AMMAROO	36	-	-	74	38	
IRRULTJA	36	33	3	13	16	
ATNUNGURRPA	8	7	-			
ANTARRINGINYA	35	18	3			
NGKWARLALANIMA	26	39	5			
ANILTJIY	28	19	4			
SOAPY BORE	28	19	5	16	-	
URAPUNTJA STORE	6	57	11	2	93	
KURRAJONG BORE	12	14	9	17	17	
THREE BORES	2	-	-			
UTOPIA	80	6	-	228	8	
* YUENDUMU	489	252	31	577	285	

* POLLED AS STATIC IN 1990 AND MOBILE IN 1987

DIVISION OF VICTORIA RIVER

MOBILES	1990 ELECTION			1987 ELECTION		
	NO. ENROLLED	ORD VOTES	SECT VOTES	NO. ENROLLED	ORD VOTES	SECT VOTES
TIMBER CREEK	110	98	10	39	46	N O
BULLA CAMP	78	45	4	43	30	
AMANBIDJI	37	23	12	43	15	
VRD STATION	44	11	1	65	9	
YARRALIN	97	63	5	89	46	
PIGEON HOLE	15	7	9			
WAVE HILL	13	6	4	44	7	
DAGARAGU	107	120	41	125	129	
KALKARINGI	128	66	26	155	85	
LAJAMANU	336	201	41	360	175	
PALUMPA	88	67	5	47	35	R E C O R D
PEPPIMENARTI	115	89	12	109	59	
NARDIDI	24	8	1			
NAUIYU NAMBIYU	177	123	18	119	99	
WOOLIANA	35	35	5			
TIPPERARY	42	26	4			
SCOTT CREEK	18	6	-			
DELAMERE STN	6	9	-			
KILLARNEY	13	9	1			
TOP SPRINGS	12	1	-			
MONTEJINNI	10	4	4			
DUNMARRA	6	3	2			
NEWCASTLE WTRS	34	8	4	20	9	
ELLIOTT	234	170	13	214	167	
DALY WTRS R/H)	(6			
DALY WTRS TWN)	(6			
LARRIMAH	15	7	-	19	10	
MATARANKA	77	41	8	60	44	
* WADEYE	573	409	29	634	387	

* POLLED AS STATIC IN 1990 AND MOBILE IN 1987

DIVISION OF WANGURI

MOBILES	1990 ELECTION			1987 ELECTION		
	NO. ENROLLED	ORD VOTES	SECT VOTES	NO. ENROLLED	ORD VOTES	SECT VOTES
ROYAL DWN HOSP	-	2	77			
DARWIN PRIV HOSP	-	4	26			

gd201

